

**LMU**

LUDWIG-  
MAXIMILIANS-  
UNIVERSITÄT  
MÜNCHEN

FAKULTÄT FÜR MATHEMATIK, INFORMATIK UND STATISTIK  
INSTITUT FÜR INFORMATIK

LEHRSTUHL FÜR DATENBANKSYSTEME  
UND DATA MINING

# Eclipse



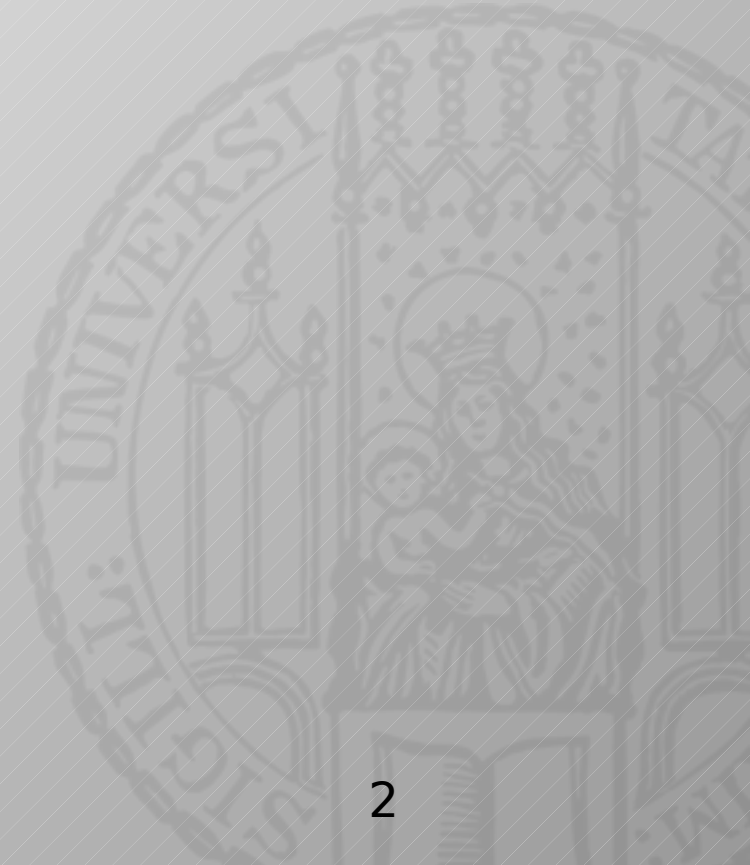
# Integrated Development Environment

Tools:

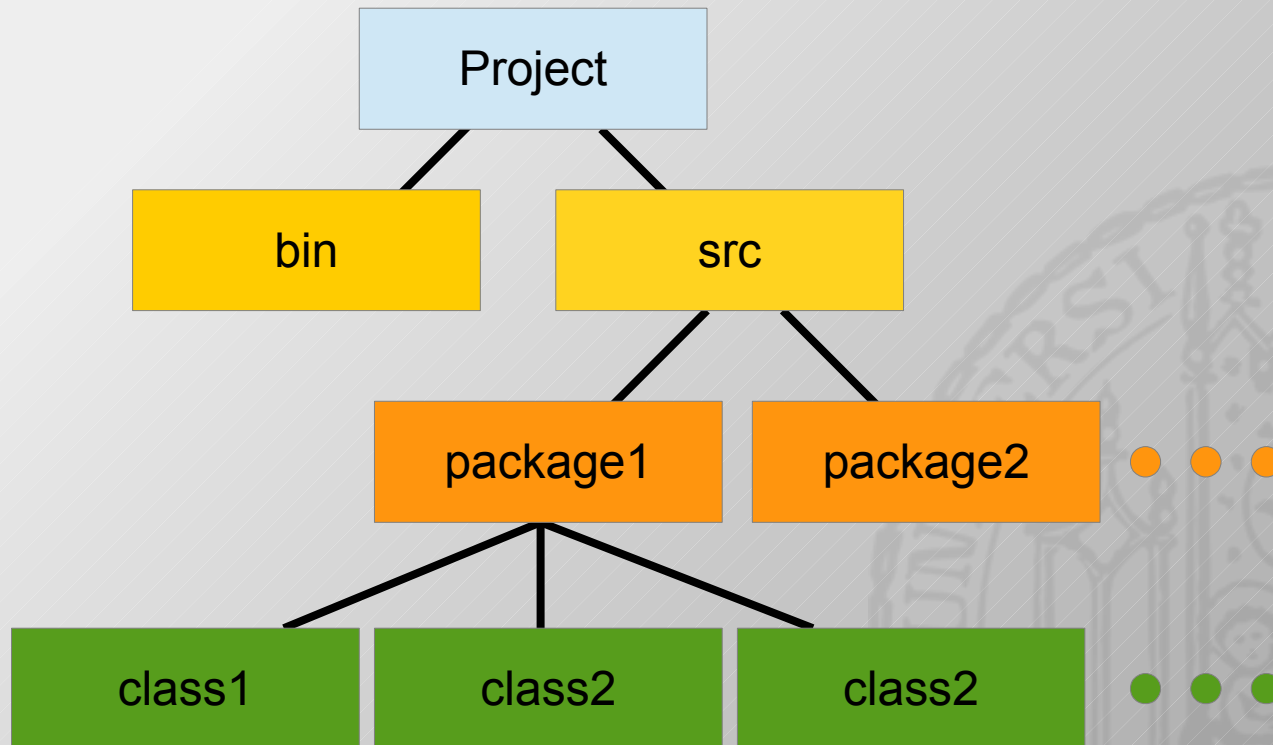
Organisation – Dateien, SVN

Bearbeitung – Editor

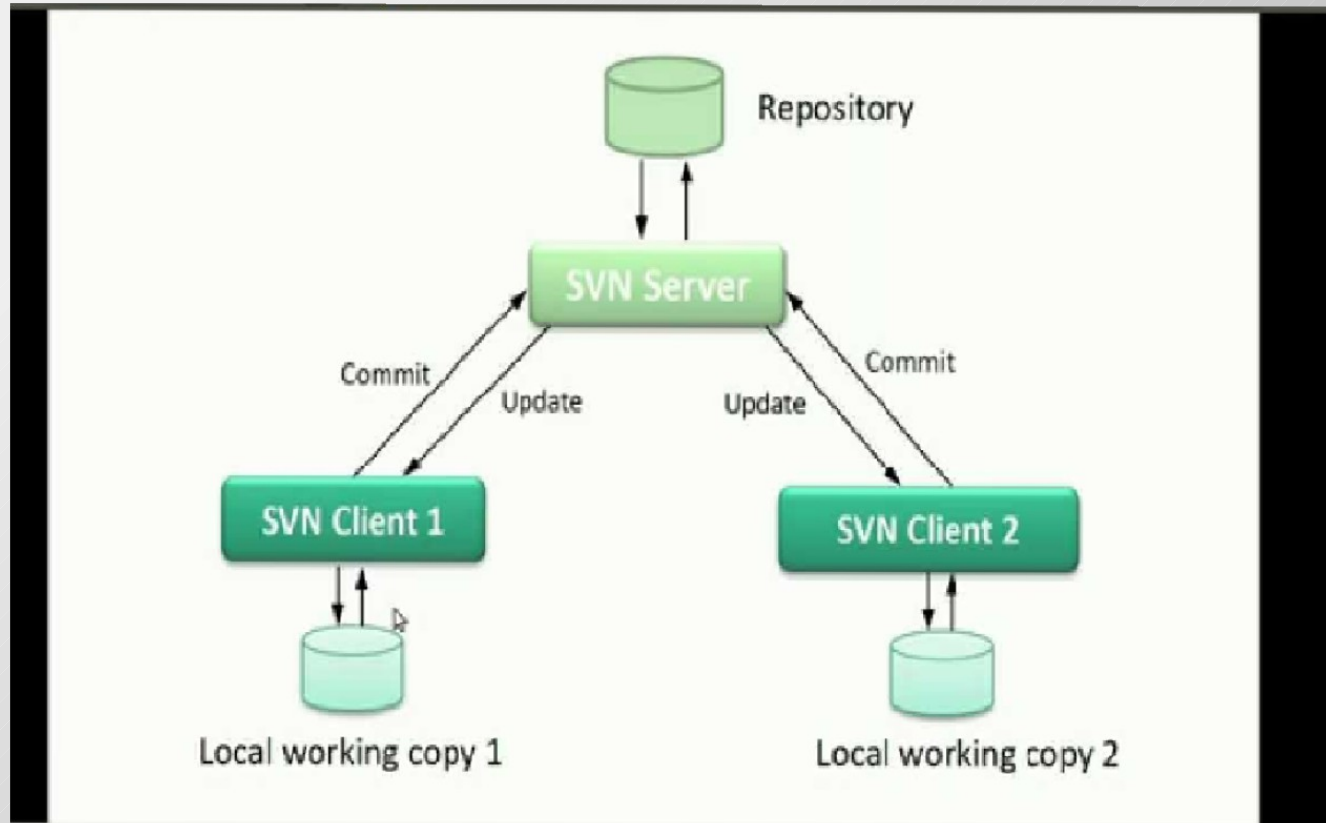
Optimierung – Debug



# Hierarchy im workspace



# Versionskontrolle



# Debugging

Fehler nachvollziehen durch schrittweise Ausführung bis zu breakpoints.

## shortcuts

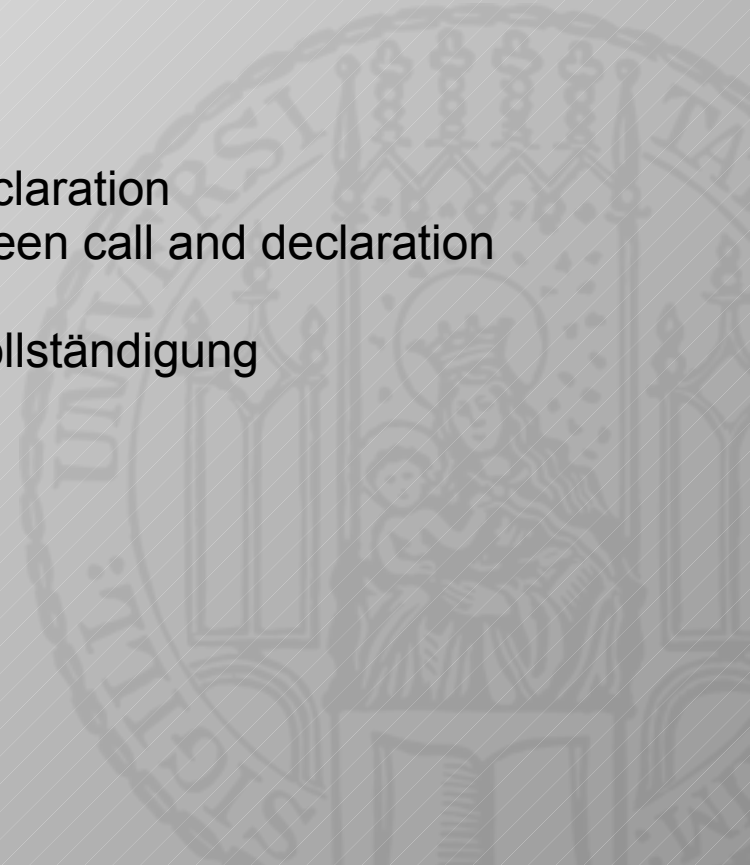
Debug:

F5 step / step into  
F6 step over

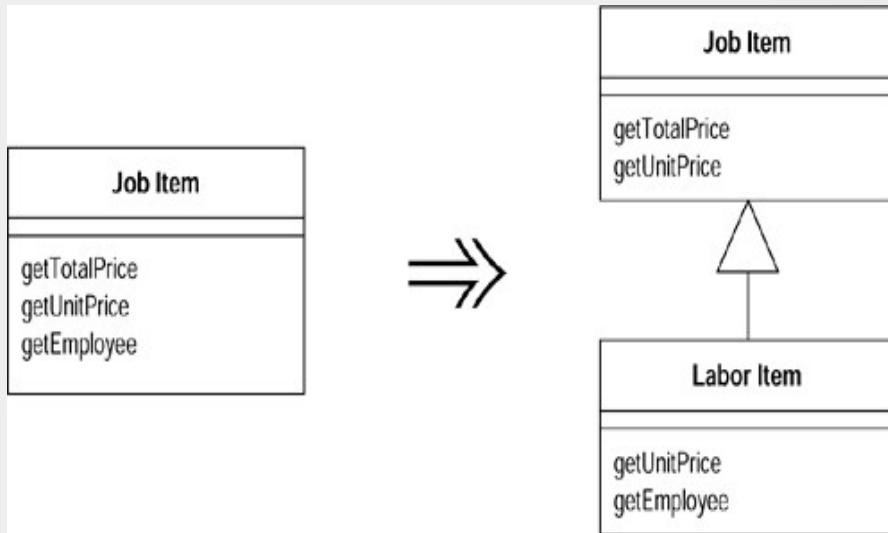
Andere:

F3 jump to method declaration  
ALT ← / → jump between call and declaration

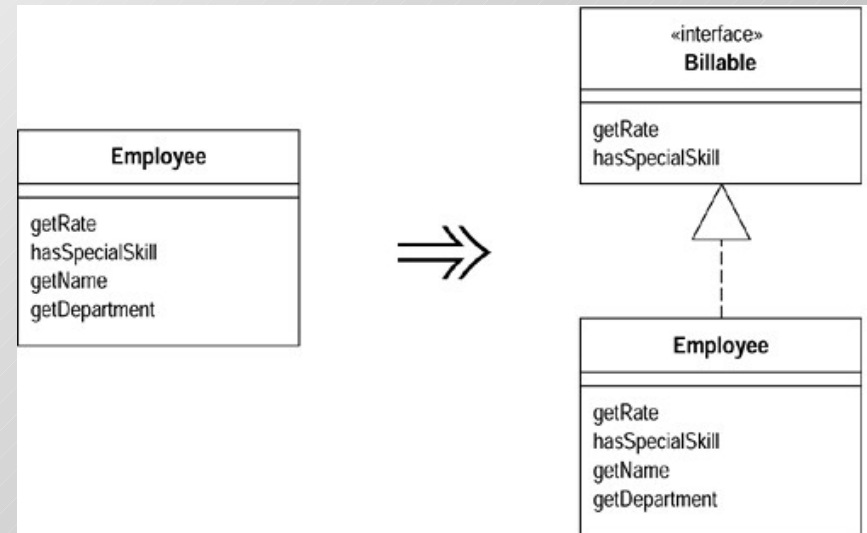
Strg + Leer Autovervollständigung



# Refactoring



Extract subclass  
Extract superclass



Extract interface  
Collapse hierarchy

